

VEHICLE SPECIFICATIONS

Working height	56m	Basket size	1 x 3.7m*
Outreach	36m	Safe working load	600KG
Overall travel length	12m	Vehicle Weight	26 tonne
Overall travel height	4m	Cage Rotation	280° + 280°
Overall travel width	2.5m	Point load front/rear	190kN/190kN

*With cage extended

JACKING

	Full	One Side	Straight Down
Width	9m	6m	3m

AVAILABLE EXTRAS



Winch



Generator



Lifting Frame

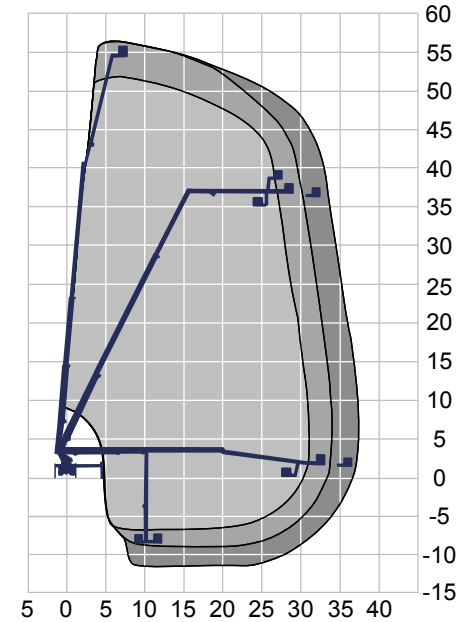
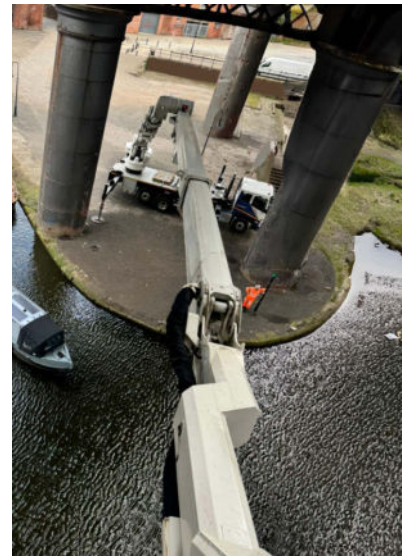


Secondary Guarding



Lights

SCAN ME FOR BOOKING & INFORMATION



600KG

360KG

120KG

