

	46 m		2 x 90°
	25 m		2 x 280°
	44 m		3.7 m + m
	700 kg		<10 m + m
	1,1 x 2,4 m (3,7 m)		18 t + kg

* depending on chassis

Diagrams presented with standard configuration. Variations apply.



2.50m (8'2")

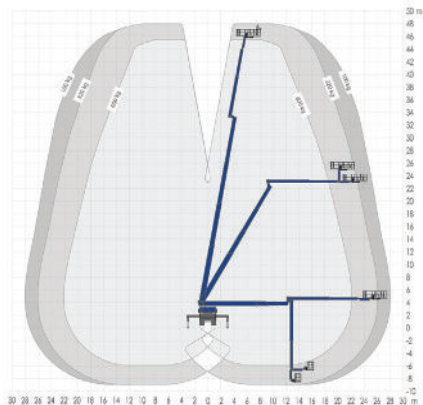


4.50m (14'76")

3.75m (12'3")



10.40m (34'1")



Full Day
Operated
POA

Extended Day
Operated
POA

Overtime
Operated
POA

Call 0333 800 6000
sales@smartplatforms.co.uk

Jacking width is measured to the centre of the leg and does not include jack pads.
All specs serve as a guideline only and are correct at the time of going to print.
Smart reserve the right to change the specification without any prior notice.