

▶▶▶ S35J

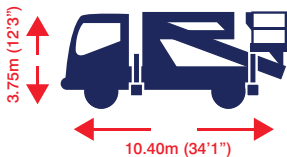
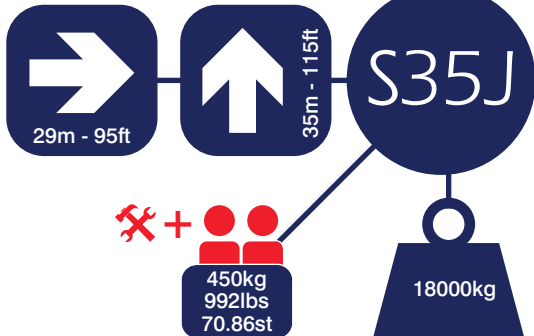
smart  
platform rental ltd

**1 Day**  
Operated  
**POA**

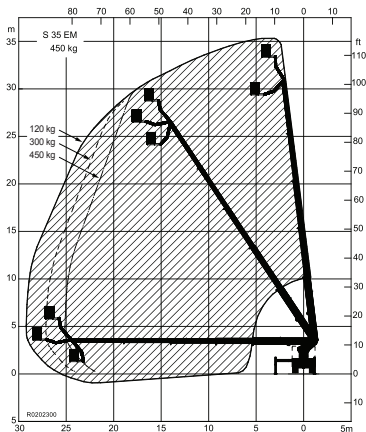
**Night**  
Operated  
**POA**

**Sat / Sun**  
Operated  
**POA**

- ▶ Secondary Guarding
- ▶ Lifting Frame
- ▶ Winch
- ▶ Built in Generator



**Lift up system available,  
please call for details.**



Call 0333 800 6000  
sales@smartplatforms.co.uk

26 www.smartplatforms.co.uk

Jacking width is measured to the centre of the leg and does not include jack pads.  
All specs serve as a guideline only and are correct at the time of going to print.  
Smart reserve the right to change the specification without any prior notice.