

technical specification ▶▶▶

Boom specification

- ▶ working height 25.6m (83' 11")
- ▶ outreach limit 12m (39' 4")
- ▶ load capacity 230kg
- ▶ Max. jacking width 2.8m (9' 2")

Travel Dimensions

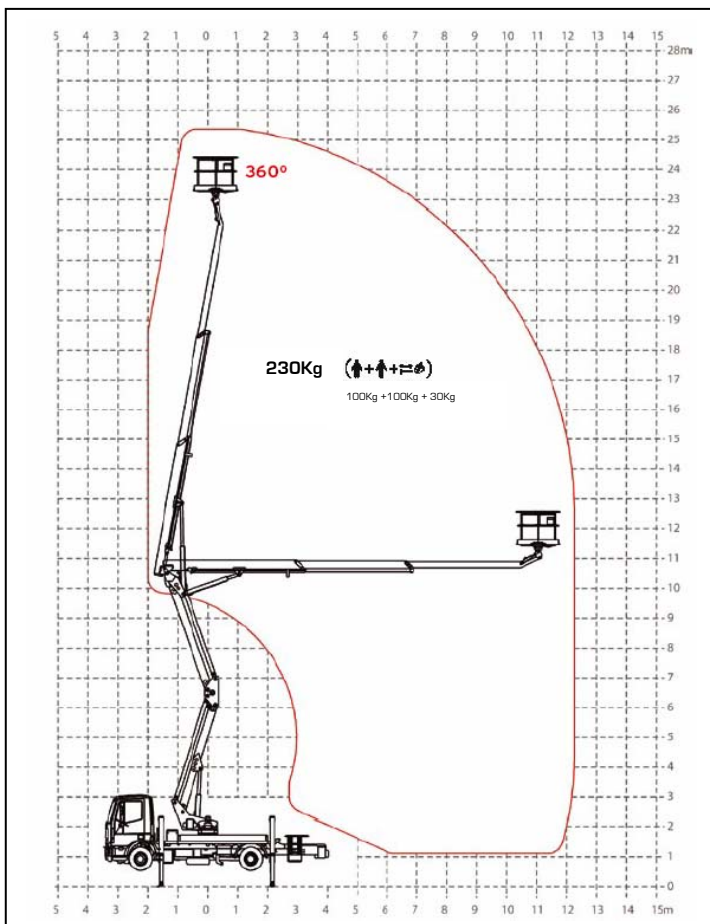
- ▶ 7500kg GVW Iveco chassis
- ▶ Stowed height 3.33m (10' 11")
- ▶ Stowed width 2.69m (8' 6")
- ▶ Stowed length 7.45m (24' 5")

Features

- ▶ Zero tail swing
- ▶ 360 degree boom rotation
- ▶ Automatic cage overload sensor
- ▶ Smooth proportional hydraulic controls

Z-26 ▶▶▶

Self-Drive Access



smart ▶▶▶ platform rental ltd

tel: 0871 871 92 92 - fax: 0871 871 93 93

www.smartplatforms.co.uk