

technical specification ▶▶▶

boom specifications

- ▶ working height 20.0m (65ft)
- ▶ outreach limit 9.5m (31ft)
- ▶ load capacity 200kg (440lbs)
- ▶ 360 degree boom rotation
- ▶ 75 degree cage rotate

vehicle chassis

- ▶ Nissan 120hp Cabstar
- ▶ 3500kg GVW

travel dimensions

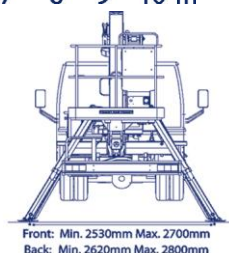
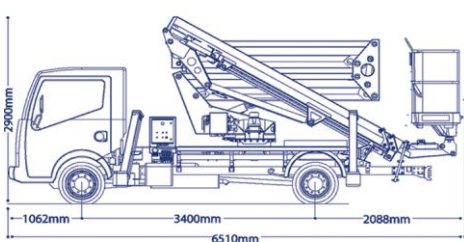
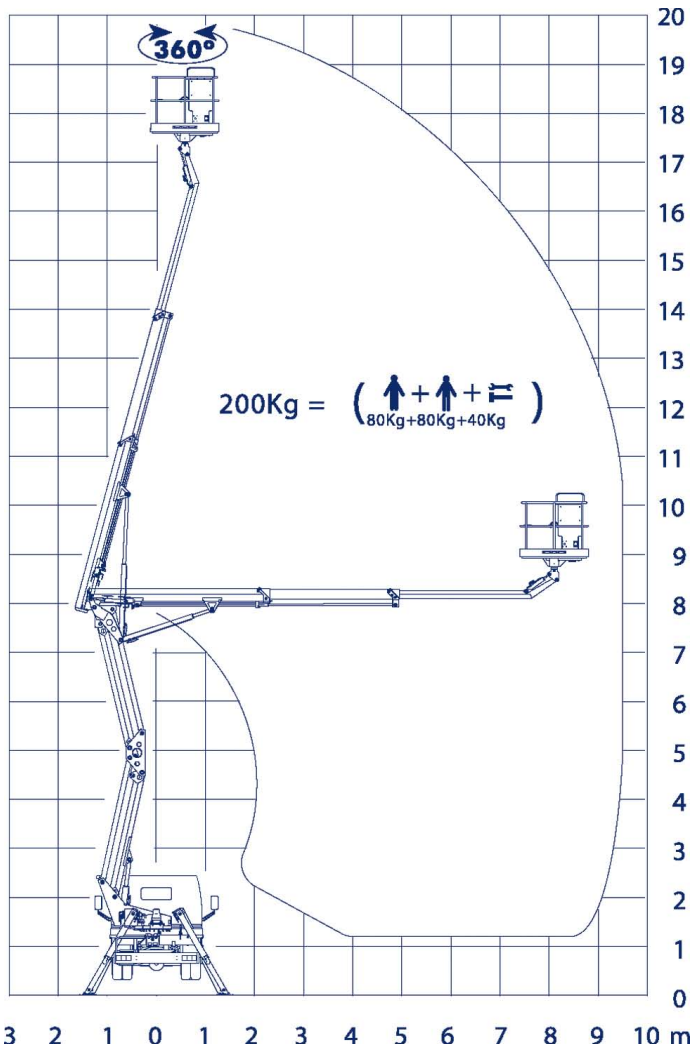
- ▶ stowed height 2.90m (9ft 7")
- ▶ stowed width 2.20m (7ft 3")
- ▶ stowed length 6.55m (21ft 6")

Z-20 ▶▶▶

Self-Drive Access



Smart ▶▶▶ platform rental



All specs serve as a guideline only and are correct at time of going to print. Smart reserves the right to change the specification without any prior notice

tel: 0871 871 92 92 fax: 0871 871 93 93

www.smartplatforms.co.uk