

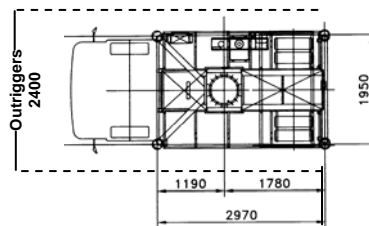
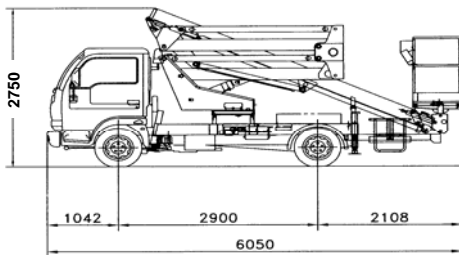
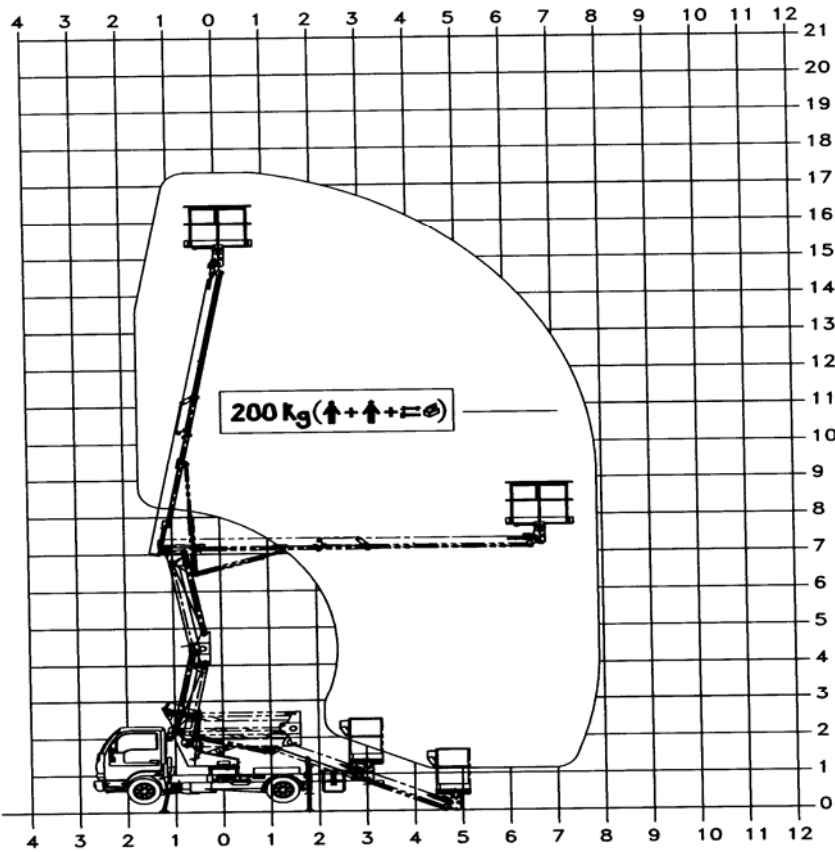
# technical specification ▶▶▶

## boom specification

- ▶ working height 17.2m (56ft)
- ▶ outreach limit 8m (25ft)
- ▶ load capacity 200kg
- ▶ 360 degree boom rotation

## vehicle chassis

- ▶ nissan 120hp cabstar
- ▶ 3500kg GVW
- ▶ air conditioned



# Z-17 ▶▶▶

## Self-Drive Access



**smart** ▶▶▶ platform rental