

technical specification ▶▶▶

boom specifications

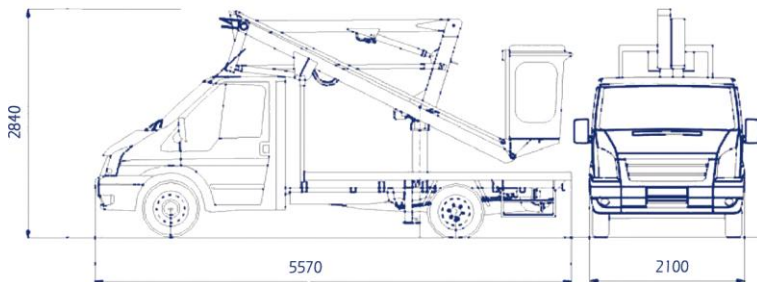
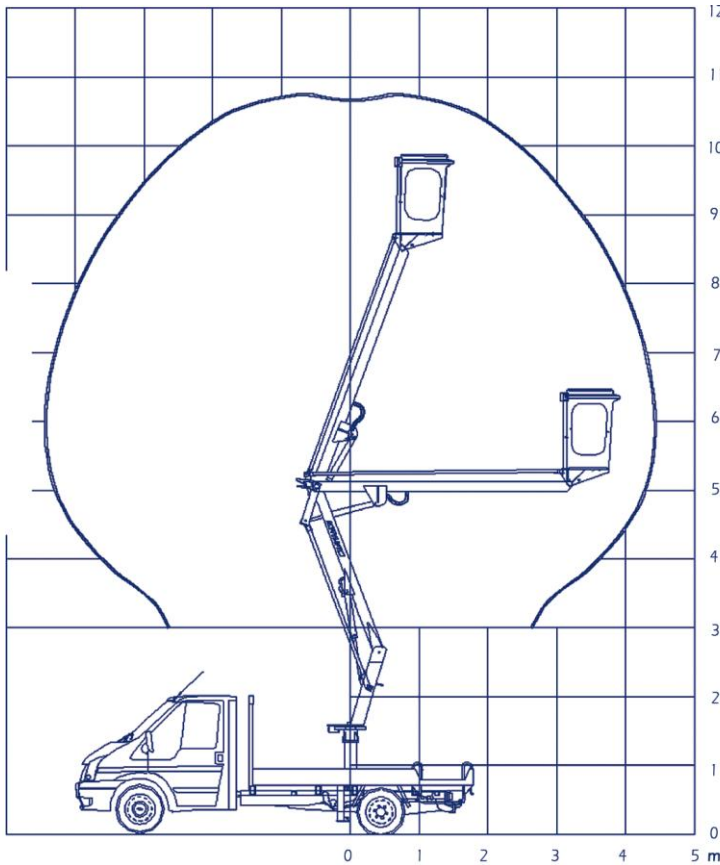
- ▶ working height 10.8m (35ft)
- ▶ outreach limit 4.4m (14ft)
- ▶ load capacity 200kg (440lbs)
- ▶ working width 2.20m (7ft 3")
- ▶ 360 degree boom rotation

vehicle chassis

- ▶ Ford 2.4litre Transit
- ▶ 2600kg GVW
- ▶ Tool storage capacity

travel dimensions

- ▶ stowed height 2.90m (9ft 7")
- ▶ stowed width 2.20m (7ft 3")
- ▶ stowed length 6.60m (21ft 10")



Z-10 ▶▶▶

Self-Drive Access



smart ▶▶▶ platform rental

All specs serve as a guideline only and are correct at time of going to print. Smart reserves the right to change the specification without any prior notice