

# technical specification ▶▶▶

- maximum working height 26.4m (86.5ft)
- maximum load capacity 350kg

## jacking option 1 —————

extended one side

- width 3.45m (11.3ft)
- max outreach at 100kg (1 person) 17.2m (56.4ft)
- max outreach at 350kg (3 persons) 13.9m (45.6ft)

## jacking option 2 —————

straight down jacks working over the side of vehicle

- width 2.5m (8.2ft)
- max outreach at 100kg (1 person) 14.3m (46.9ft)
- max outreach at 350kg (3 persons) 10.9m (35.8ft)

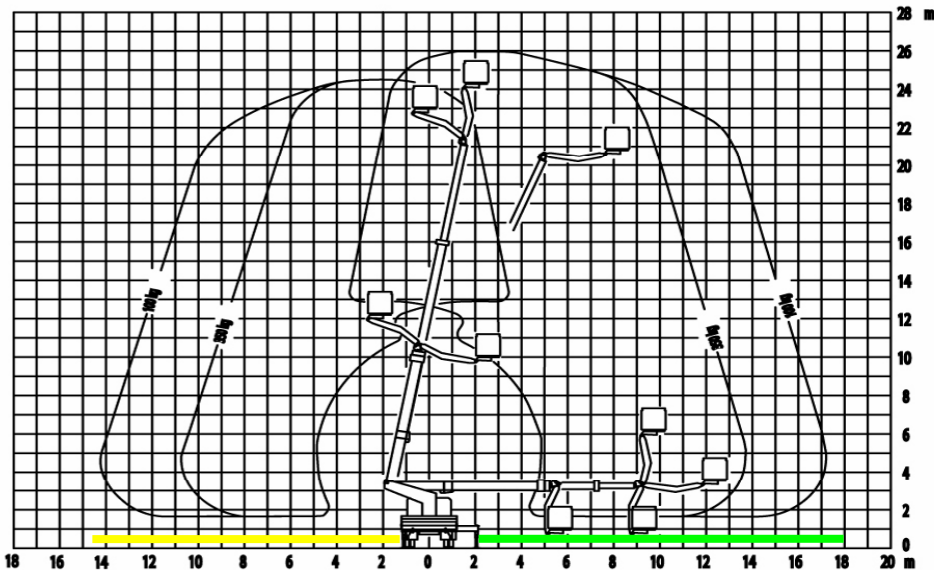
straight down jacks working over the back of vehicle

- width 2.5m (8.2ft)
- max outreach at 100kg (1 person) 17.2m (56.4ft)
- max outreach at 350kg (3 persons) 13.9m (45.6ft)

## travel dimensions

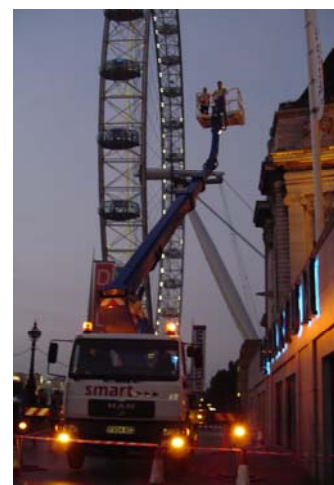
- stowed height **3.6m (11.9ft)** – width **2.6m (8.6ft)**
- length **9.1m (30.0ft)** - gross vehicle weight **7.5tonnes**

- 200° 3.0m fly jib
- automatic jack leg levelling
- one touch auto docking
- air conditioning and CD radio
- cruise control
- large body width storage tray
- 45° cage rotate



# S-26j

## Self-Drive Access



smart
▶▶▶ platform rental